

Region J Newsletter



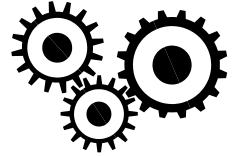
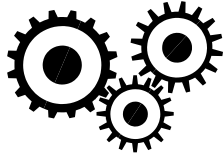
Wendy's Welcome (A Note from the Region Governor)

May 2012
Volume 1, Issue 7



Contents

Governor Message	1
Upcoming Events	2
Communication	2
Region Meetings	3
New Region Officers	4-5
New Collegiate Officers	6
Society Awards	7
Call for Judges	7
Grants	7
Spotlights	8-9
Congressional Visit	10
Membership	11
Meeting Schedule	12
Important Dates	12



Welcome Spring!
We've been waiting for you.

As spring arrives, so does SWE election season. Throughout April, members had the opportunity to shape next year's SWE leadership.

I hope that each one of you took the opportunity to cast your ballot and make your voice heard.

Region J offices on the society ballot were Governor, Professional Senator, and Alternate Professional Senator. Please join with me in congratulating our candidates on their success!

Alice Orrell, Region J Governor (FY13-14)
Suzi Jewett, Professional Senator (FY13-14)
Wendy Jenkins, Alternate Professional Senator (FY13)

At the April Region J Council meeting, voting members of the council unanimously elected the candidates to fill next year's board. Congratulations go out to the FY13 team:

Alicia Boyd, Lt. Governor
Jennifer Kootstra, Treasurer
Jessica Sun, Secretary

Collegiate elections have also concluded and I would like to congratulate each of our FY13 Region J Collegiate Team members:

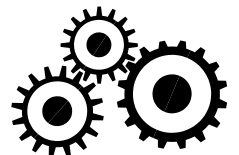
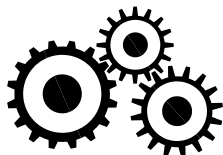
Elaine Wilcox, RCR
Nicole Zimmerman, RCCE
Nicole Kissinger, RCS

Congratulations to all of next year's officers.
Welcome to the team!

Society elections, Region elections . . . But wait, there's more! Sections are preparing their slate of candidates for next year's officers. If you are interested in serving your local SWE Section in some capacity, be sure to reach out to this year's section officers and see where your passion and skills may be needed.

Remember that the skills that you learn and practice in your leadership positions within SWE may help prepare you for your next opportunity at work.

It's a win-win-win for you, your section, and your employer.





Upcoming Events and Due Dates

Collegiate Section Reports Due

Tuesday, May 1st
Send report to [Elaine](#).

RCT Teleconference

Tuesday, May 8th
6pm AK/7pm Pacific
Conference Dial-in No.:
(218) 339-4300
Participant Access Code:
797789#

Prof. Section Reports Due

Thursday, May 10th
Send report to [Wendy](#).

Section Vitality Assessment

Thursday, May 10th
To LCC Coaches and
Region Governor

Region Newsletter Content Deadline

Monday, May 14th

Region Teleconference

Monday, May 21st
5pm AK/6pm Pacific
Conference Dial-in No.:
(218) 339-4300
Participant Access Code:
797789#

All Together Newsletter Content Due

Thursday, May 31st
To swenews@swe.org

Section Elections

Completed by June 1st

FY13 Leadership Roster

June 1, 2012
To SWE HQ and
Region Governor

Society Section Awards

July 1, 2012
To SWE HQ
See Page 7 for details.

FY13 Financial Report

July 30th
To SWE HQ and
Region Governor

ABJ Conference

Spokane, WA/
Coeur d'Alene, ID
DATES

WE12 Conference

Houston, Texas
November 8-10, 2012

Region J FY13

Conference
April 5-7, 2012



Region Communications

To keep members up to date with Region J information and events, there are several communication channels that will be utilized this year. Take advantage of each of these so that you'll always be "in the know"!



Region J Newsletter This monthly publication will be sent via e-mail to all Region J members.

Region J Website Looking for links to each of the Section's websites or Region Officer e-mail addresses? Look no further than the [Region J Website!](#)

Region J Senate Blog

Our Senators use this venue to communicate information regarding Society-level business that they conduct on your behalf. Let your voice be heard! Subscribe to the [blog](#) and participate in surveys posted throughout the year.

Region J Collegiate Blog

The Region J Collegiate Communications Editor (RCCE) keeps this blog up-to-date with happenings from across Region J and the Society. [Subscribe](#) and receive e-mail notifications when new items are posted. Items posted are relevant to all members.

Dropbox A Dropbox folder has been set up on which we will store documents related to Region J business, such as motions, agendas and minutes, reports, etc. If you are a region leader and have not yet received an e-mail invite to this site, please contact [Wendy Obenauf](#).

Facebook Like Region J on Facebook: <http://www.facebook.com/#!/groups/2212498850/>

Snail Mail You can also send Wendy mail through the US Postal Service at:

P.O. Box 219102
Portland, OR 97225-9102

"We are stronger when we listen and smarter when we share."

- Rania Al-Abdullah



2012 ABJ Meeting

The Region ABJ meeting is held before National Conference and consists of training and discussions on SWE strategic issues. The WE12 conference will be November 8-10, 2012 in Houston, Texas. Attendance at this meeting is about 40-50 people.

Another reason to put ABJ on your calendar is for networking and meeting SWE members from the three regions, plus meet with SWE Board of Directors (like the Society President and President-Elect) who attend because they are interested in hearing what you have to say:

The typical ABJ meeting schedule is

Friday Evening	Registration and informal social gathering
Saturday	Joint Regions A, B, and J Meeting
Sunday	Individual Region Meetings

The ABJ Meeting will be held in the Spokane, Washington/Coeur d'Alene, Idaho area from September 21-23, 2012. The region will be coordinating the meeting with the help of a planning team. The planning team will arrange for a hotel room block and reserve meeting space for the Saturday and Sunday meetings.

Stay tuned for more details in future newsletters!

2013 Region J Conference

The 2013 Region J Conference is the premier region event after the Society Conference, and is open to all SWE members and non-members.

The Region meeting starts with tours and other social activities. The conference provides both professional and collegiate development tracks. The conference also provides a career/job fair for participants. Professional and collegiate meetings wrap up the event. The typical Region Conference schedule is:

Friday	Registration, tours, and informal social gathering
Saturday	General Conference
Sunday	Region Meeting

South Puget Sound (SPS)/St. Martin's University's bid of intent was accepted during our Region meeting on Saturday, March 3, 2012. The conference will be held in Lacey, Washington from April 5-7, 2013.

Area highlights and potential tours/activities include St. Martin's new engineering building (supposed to receive LEED Platinum status), the Tacoma-Narrows Bridge, Naval Shipyard, Puyallup Art Walk, Point Defiance Zoo, and wine tasting (facilitated by the monks at St. Martin's).

SPS and St. Martin's are still working on a conference theme. **Do you have a great conference them idea?** Send it to [Danette Hilton!](#)



Experience three days of energy and a lifetime of opportunity at WE12, November 8-10 in Houston.

With more than 5,000 women engineers and technologists, the WE12 Conference is the perfect place for both experienced professionals and collegians just starting their careers to:

Participate in valuable professional development sessions

Network with other engineering professionals and students

Find your dream job at the Career Fair, featuring more than 200 companies, government agencies and universities

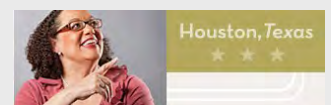
Experience Houston through numerous technical and sight-seeing tours

Enjoy exciting plenaries and awards banquets, including Celebrate SWE!

Relax in the Lava Lounge, where you can read inspiring stories of SWE women and share your own

Learn about the benefits of attending as a [professional](#) and as a [collegian](#).

For more information about Houston, go to visithouston-texas.com.





What's That Mean?

Here's a quick guide to the acronyms used in this newsletter:



COR

Council of Representatives

CVD

Congressional Visit Days

EYH

Expanding Your Horizons

FE

Fundamentals of Engineering

FY

fiscal year

HQ

Headquarters

JCon

Region J Conference

LCC

Leadership Coaching Committee

LEED

Leadership in Energy and Environmental Design

LGBT

Lesbian, Gay, Bisexual, and Transgender

MAL

Members-at Large

Meet Your New Region Board Members!

FY13-FY14 Region Governor - Alice C. Orrell, P.E.

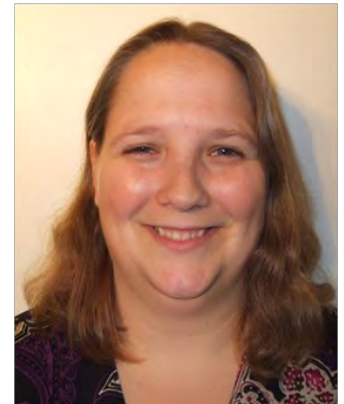


Alice has been a member of SWE since 1997; first as a collegiate member in Vermont, and now as a professional member in Region J. Alice has held various leadership roles in Eastern Washington section. She was also the co-chair of the 2010 Region J Conference ("JCON10"). As co-chair, Alice managed all efforts of conference planning and directly coordinated the fundraising efforts. The conference had a net profit of over \$11,000 and was attended by more than 100 SWE members and supporters. Also in 2010, Alice completed the effort to get J001's new bylaws approved; a process that started in 2008. After simultaneously serving as conference co-chair and section president in FY2010, Alice took a break from formal leadership roles and enjoyed being a

past president and active member. Now rested, she's ready to participate at the region level as the Region J Governor!

FY13 Lt. Governor - Alicia Boyd

Alicia graduated with a B.S. in Civil Engineering from Washington State University in 2001. She is now an Environmental Specialist with the Washington State Department of Ecology. Alicia has served the last several years as Section Representative for the Eastern Washington Section. As a member of Region J for both collegiate and professional careers, she is familiar with the challenges that the Region faces. Alicia intends to continue the work that has been done to involve the collegiate members in Regional and Society level business. She will work to ensure that individual collegiates and sections feel connected to the Region and Society level and to make certain that their voice is heard through use of their Representative, Senator, and Communications Editor.



FY13 Treasurer - Jennifer Koostra



Jennifer has been a member of the SWE Sierra Foothills Section in Region A in Northern California since 1997. She started her SWE "career" helping with the Sierra Foothills Section Engineering Awareness Program (EAP) for High School girls in the spring of 1997. Soon after she was asked to run for the office of section Treasurer. At the time she had no Treasury experience, but knew how to balance a checkbook. She served as their Treasurer for eight years, and has been Co-Treasurer for two Region A Conferences. She also served as the Region A Treasurer in FY2009. As the SWE Region J Treasurer, she plans to keep accurate and complete electronic records of all the organization's financial transactions. She will have paper trails to validate each entry. She will organize the record keeping to allow for simple financial reporting, so members of the executive

team will have any financial information they need upon request. This will also make the end of year reporting straight forward and easy. With her many years of experience, she is very familiar with the SWE and IRS financial reporting requirements.



Meet Your New Region Board Members!

FY13 Secretary - Xiao (Jessica) Sun

Xiao (Jessica) Sun works as a Manufacturing engineer at Boeing Commercial Airplanes 787 Program in Everett, WA. She has a BS in Mechanical Engineering from Cal Poly San Luis Obispo, CA. She joined the SWE collegiate section while at Cal Poly. From 2006 to 2009 she served as the philanthropy director, outreach assistant, and historian. After moving to Seattle in 2011, she immediately joined the SWE-PNW section, and volunteered to be part of team leading the Expanding Your Horizon Program at Seattle University and Bellevue College. She is stepping up to the region level as Region J secretary. She is committed to carefully taking minutes of all region meetings and teleconferences and maintaining organized records and minutes of the meetings for future reference. She also plans to attend the regional and national SWE conferences. She is looking forward to serve both as a leader and supporter of the SWE Region J team, enriching SWE visions and making the organization more productive.



FY13 –FY14 Professional Senator - Suzie Jewett



Suzanne Jewett graduated in 2000 from The University of Colorado – Boulder with a BS/MS in Mechanical Engineering. While in College Suzi was active in her SWE section as CORE member, Treasurer and President. Among her jobs in college, Suzi was a National Science Foundation Fellow teaching engineering and technology in local high schools in addition to working at the Women in Engineering Program. Suzi is a SWE Life Member and has recently held positions as Awards coordinator and Section Representative. As a Senator she hopes to bring process improvement, Region interest representation and help lead the group to tackle large issues with systematic problem solving and long-term impact consideration.

FY13 Alternate Senator - Wendy Jenkins

Wendy Jenkins is currently a tool engineer at The Boeing Company in Seattle, WA. She believes it is important for the regions to be equally represented in the Senate. As such, it is vital that someone is willing and able to fill in for the elected Senators if for some reason they are unable to fulfill their duties. Given that the Senate is a high functioning body, it is also important for Alternate Senators to be well aware of what has been happening in the Senate. They must participate in all Senator training and conference calls as well as attend the Senate meeting at the Society's Annual Conference. Wendy has the background and knowledge to easily serve in this role. Though she has never served as a Senator, she previously served on the COR and as the Region J Alternate Senator. She also chaired the task force that developed much of the current Senator training and is well aware of the role and its expectations.



And Still More Acronyms!

OCS

Outstanding Collegiate Section

ONCS

Outstanding New Collegiate Section

PDG

Professional Development Grant

PNW

Pacific Northwest

RCT

Region Collegiate Team

RCR

Region Collegiate Representative

RCCE

Region Collegiate Communications Editor

RCS

Region Collegiate Senator

SME

Subject Matter Expert

SPC

Strategic Planning Committee

SPS

South Puget Sound

STEM

Science, Engineering, Math and Technology

SWE

Society of Women Engineers



Meet Your FY13 Region Collegiate Officers

RCT Members

Lt. Governor

Melissa Branch
greatlandgirl@gmail.com

RCR

Elaine Wilcox
regionj@gmail.com

RCCE

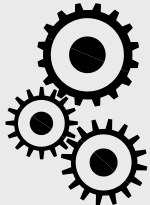
Jenelle Parson
parsonje@onid.orst.edu

RCR

Amanda Dang
amanda.t.dang@gmail.com

SWEFL

Mary Peterson
mypeterson03@yahoo.com



Next RCT Teleconference

Our next teleconference is scheduled for Tuesday, May 8th at 6pm AK/7pm Pacific/8pm Mountain time. All collegiates are invited to participate in the call - just listen in or pipe up and share! Call-in info is listed in the *Upcoming Events* section on page 2.

Region Collegiate Representative - Elaine Wilcox

Elaine is a junior in bioengineering at Oregon State University. She is currently on a six month internship at Oregon Freeze Dry, freeze drying bacteria and working in a lab. Oregon Freeze Dry is a wonderful place to work, but with a workforce that is approximately 10% women, she has never been more thankful for SWE. Her mom has been informally involved with SWE for years and her sister was president of her section for a while, so joining SWE was an obvious choice for Elaine right when she started college. Her SWE experience has evolved throughout the course of her studies, and she doesn't know of any other organization that has the ability to do that. The things she loves most about SWE are making connections with professionals, doing outreach, and being surrounded by an empowering group of women who she can relate to. Elaine am extremely excited to be RCR again this year and to help make our region stronger than ever!



Region Collegiate Communications Editor - Nicole Zimmerman



Nicole attended her first SWE meeting at Portland State last spring. At the time, 2012 officer nominations were going on. Their advisor suggested that she might serve well as president. She decided to go for it and hasn't looked back since. This past year has been a crash course in learning to effectively lead others, managing her time, navigating her way through the SWE landscape, and many other valuable lessons. Being actively involved with SWE has offered her a safe place to cultivate skills that will be immensely powerful tools in the professional world. She is excited about her new position because she can learn new ways to effectively communicate with others while increasing the visibility of SWE at the college level.

Region Collegiate Senator - Nicole Kissinger

Nicole Kissinger is a Junior in Mechanical Engineering at Gonzaga University in Spokane, Washington. She became a part of SWE the end of her sophomore year, and was elected the role of President of the Student Section at GU for the upcoming year. At the time, SWE was kind of a joke at the school ... not many members, rarely did anything ... that summer she got the board together and they all went out to find sponsors for the section in their hometowns. They raised enough money to send all 7 to the national conference in Chicago last October. It was a true eye-opener. She is excited to be the Region J RCS because to have a greater role in SWE. The conference changed her; it made her realize that she can make a difference. She can take an idea and put it to action. Most engineers have many great ideas... but what we become known for are those ideas that are put to action. In her own words, "I want to be that person within SWE!"





Society Section Awards

SWE Awards celebrate the lifelong contributions women engineers and technologists make to our society - and our world.

SWE offers a wide variety of awards for collegiate, professional and MALs that acknowledge outstanding contributions in the areas of Communications, Membership, Multicultural Activities, Outreach Programs, and Professional Development. Subcategories include newsletter, website, region membership, retention, recruitment, and outreach

event.

All awards must be submitted by **July 1, 2012** to awards@swe.org.

The packets for 2012 should be available on the SWE website by the time you are reading this. To access the awards info and download a packet, visit http://societyofwomenengineers.swe.org/index.php/awards/region-section#activePanels_0,1,2,3,4.

Have questions? Ask the Awards Chair at awards-chair@swe.org.



Judges Needed for Collegiate Awards

We are quickly approaching the deadline for Outstanding Collegiate Section/ Outstanding New Collegiate Section (OCS/ ONCS) awards. In order to make this a success, we are seeking judges for this competition.



What's required?

- SWE professional member with ability to login to SWE communities
- Scoring 10 entries (at most). Entries from one category - small, medium, or large student section.

- Using a revised scale to try to remove subjectivity/provide guidance and confirm the section's self evaluation.
- Make recommendations for certificates of merit
- Provide feedback on the report (best event/category and areas that need improvement, etc.)

Entries will be handled completely electronically. Judges will received entries in mid-June and must return their scored entries by mid-July. Time-frame is about 1.5-2 hours per entry.

Ideally, we would like to have 4-5 judges for each entry; a mix of experienced and inexperienced judges is preferred. We would also like to have judges from each Region.

If you are able to commit to judging between 5 to 10 award packets between mid-June and mid-July, please reply to this email or send a response to ocs-oncs@swe.org. Please respond by June 1st.

Thanks,
Denise Griffin
OCS/ONCS Award
Co-Coordinator
ocs-oncs@swe.org

"Four things greater than all things are:
Women and Horses
and Power and War."

-Rudyard Kipling

Program Development Grants

Need funding for an outreach event or idea? Professional Development Grants (PDGs) are available through SWE thanks to generous funding from Exxon Mobil Foundation and The Ford Motor Company Foundation. PDGs are available to support activities of professional and collegiate sections,

members-at-large, and Society Committee pilot projects.

Learn more at the www.swe.org/aspire. Click on "Engineers", then select "Get Funding." Still have questions? Contact [Wendy Cocke](mailto:WendyCocke), PDG Chair.





Professional Section Spotlight

Eastern Washington Section Participates in Expanding Your Horizons

On Saturday, March 24th, SWE-EWS members participated in the annual Expanding Your Horizons event (EYH). EYH is a one-day, national event at which professional women give hands-on workshops to middle school girls to teach them about their STEM related careers. EYH was started in 1974 and EWS was the original host of the event when it debuted in the Tri-Cities, Washington area. For more info on EYH, visit <http://www.expandingyourhorizons.org/>. EWS is currently supporting the program with Women in Nuclear, American Association of University Women (AAUW), and the Yakima Valley/Tri-Cities Math, Engineering, Science Achievement (MESA) group. (Picture L to R - Alice Orrell, Patricia Galloway, Denise Brandon)



EWS volunteers helped the girls register, find their workshops, serve lunch, and presented workshops on wind energy and safety engineering. Before the workshops, there is a general session. This year's keynote speaker for the general session was Dr. Patricia Galloway. Dr. Galloway is the CEO of Pegasus Global Holdings, Inc., a past American Society of Civil Engineers (ASCE) president, 2003 winner of the SWE's Upward Mobility award, 1980 winner of SWE's Distinguished New Engineer award, and a EWS member!

Collegiate Section Spotlight

University of Alaska Fairbanks Hosts 1st Annual Mr. Engineer Pageant

The ladies of the University of Alaska Fairbanks (UAF) SWE section with the Engineering Honor Society, Tau Beta Pi, hosted their first Mr. Engineer pageant on April 7, 2012 in the Bunnell Auditorium on campus. Three titles were judged and awarded: Overall Mr. Engineer, Mr. Engineering Congeniality, and Mr. Engineering Mind. Six gentleman volunteered their time and talent to support women engineers - Tripp Collier, Bret Wells, Andy Chamberlain, Alex Janorschke, John Platt, and Scott Begins. The men ranged from civil to petroleum degree fields and from sophomore undergrads to graduate students. (Picture - UAF SWE and Mr. Engineer Contestants)



To start, the guys had to strut their stuff in both formal and "engineering" wear. Then they all had to share a talent. Tripp ribbon-danced, John orated a poem, Andy and Scott sang with Bret accompanying them on piano. The contestants were then put to the test by Tau Beta Pi Vice-President Joe Stribrny. Joe asked Fundamentals of Engineering (FE) questions of the contestants, who had to share their knowledge of basic definitions and engineering concepts. Brett Wells won Mr. Congeniality, Alex Janorschke won Mr. Engineering Mind, and Tripp Collier took the title of Overall Mr. Engineer. (Picture - The contestants taking a Capri-Sun break after their grueling fashion session.)

Mr. Engineer 2012 Winners
Brett Wells, Tripp Collier,
and Alexander Janorschke





Member Spotlight - Marcie Mathis



I joined SWE in 1988 as a student at the University of Washington, and the first way I was active as a member was by being the treasurer of my collegiate section. For many years after I graduated I was not very

active in SWE, mostly because the local activities were in Seattle and just too far away. I still felt a special connection to the women at any SWE event, and kept SWE near and dear to my heart. I did make it to the occasional meeting or event, and even to the national conference when it was in Portland, Oregon. An interesting highlight of that conference was having fun telling folks that I rode my bike to the conference because I had! The Seattle to Portland bike ride was the weekend before and it was a great feeling to complete that ride for the first time.

When the South Puget Sound section started up and some events seemed a little closer to home, I started to get more involved. About the same time I was getting more involved with another professional organization, the National Organization of Gay and Lesbian Scientists and Technical Professionals

(NOGLSTP). Although there was already a good rapport between SWE and NOGLSTP, I saw an opportunity to help increase communications between the two organizations. I am now more involved with SWE in part because I enjoy occasions to be a little bit of a liaison between both organizations.

My passion is advocating against injustices, and I find myself speaking up for women, engineers, LGBT folks, bicycle riders and others whenever I can. The "speaking up" often takes the form of writing and I do much of my advocating via email, letters to the editor, and a blog sponsored by the Kitsap Sun, my local paper.

My passion for advocacy has steered the direction of my involvement with SWE, and I am currently on the SWE Multicultural Committee and the SWE Magazine Editorial Board, as well as being the South Puget Sound Section Representative. My work with the SWE Multicultural Committee includes championing a SWE LGBT Affinity Group.

I have many community and personal activities to keep me busy, and I plan to include SWE as part of that for as long as I can.



Marcie's advocacy in action at the SWE 2012 Western Regions Joint Conference in March.

Collegiate Section Spotlight

University of Idaho Hosts Dinner with the Dean

On Tuesday, April 10, 2012, the University of Idaho collegiate section hosted its annual Dinner with the Dean event. The event was organized by Valerie Barry, with help from Christina Jordan and other SWE members. Alice Orrell and Jennifer Williamson from Eastern Washington Section attended. Alice gave a presentation about her background, her current wind energy work, and the benefits of being a SWE member. Over 60 female engineering students (and one student's lucky husband) attended along with the Interim Dean, Dr. Larry Stauffer; his wife, Susan; the section's advisor, Dr. Aicha

Elshabini; and, engineering student services staff members.

During the event, the collegiate section introduced its new idea to have a mentoring program for female engineering students. The intent of the program is to pair incoming students with more senior students who can help new students navigate the engineering college, give advice on professors and classes, and be available to chat. The Dean solicited requests for improvements he could make in the near term, and new chairs and couches in the thinkTANK were popular requests!





Congressional Visit Days in Washington, DC

Contact Info

Carla Todenhagen
carla@khpatent.com

Linda Thomas
waclarone@yahoo.com



Kelly Schable (SWE Director of Education) and I participated in a S W E - h o s t e d Congressional Visit Day (CVD) event March 21-22, 2012. CVD was sponsored by a grant from the S.D. Bechtel, Jr. Foundation. The CVD theme - "Diversity and Inclusion Fuels Innovation in STEM," increases awareness to the US Congress of the need for and the importance of increased diversity and inclusion in the science, technology, engineering, and mathematics (STEM) workforce. Participating societies prepared for this event through a briefing webinar the week prior to CVD.

The events during March 21 and 22 featured a meeting with guest speakers from SWE leadership, government and industry; a reception featuring several Congressional representatives who are STEM advocates; and a pre-meeting briefing on the morning of March 22nd.

The March 21st meeting included a special guest, NASA Administrator Charles Bolden, who talked about the importance of encouraging and nurturing the next generation of students to pursue STEM careers.

After the briefings, Kelly and I met with staffers from the offices of Senators Maria Cantwell and Patty Murray, and from our districts: Rep. Dave Reichert, and Rep. Jay Inslee (who had just resigned from his position to focus on the gubernatorial election). During these visits we explained the status of w o m e n a n d underrepresented ethnic groups in STEM, and briefed them on the current STEM bills and FY 2013 appropriations bill i t e m s u n d e r consideration:

- Support President's request for National Science Foundation at \$7.373 billion;
- Support the President's request for the Education and Human resources Directorate at \$875 million
- Stress the importance of maintaining funding for the gender-specific and minority-focused programs at the National Science Foundation, i.e. the ADVANCE program (\$17.06 million) and the Research for Gender in Science and Engineering program (\$10.5 million)

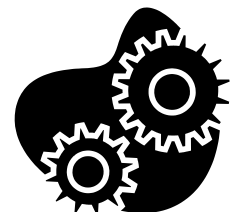
We also volunteered to be resources on STEM issues for women and

underrepresented ethnic groups. The outcomes of these meetings were positive; we had good conversation with all the staffers and we felt fortunate that our state legislators are such strong STEM supporters.

We encourage you to consider talking with your C o n g r e s s i o n a l representatives, in your state's district. The good news is you don't have to travel all the way to Washington, DC to do this; you can schedule an appointment with your representative's office in your state to discuss the details. Chances are you may have the discussion with one of your Congress person's staff, and they always appreciate hearing from constituents!

To start, contact Carla Todenhagen, from Region J who's on the Government Relations and Public Policy committee, and she can give you details on how to start the dialogue with your representatives.

Linda Thomas
SWE Director of Regions





Membership

Not a SWE member yet?
Join today at www.swe.org/join



Did you let your membership lapse?
You can renew easily at www.swe.org/renew

If you have problems during the renewal process, contact SWE directly for support at 1-312-596-5223.

If you have membership questions, you can contact [Dana Day](#). If she doesn't know the answers, she can point you in the right direction!

By the Numbers (as of March 2012)

	Unpaid (Non-Renewals)	Total Paid	Growth from FY11
J001 - Eastern Washington	5	39	29%
J002 - Columbia River	39	88	21%
J003 - Pacific Northwest	84	229	27%
J005 - Greatland	8	32	9%
J006 - Southwest Idaho	11	16	8%
J007 - Willamette Valley	5	25	8%
J008 - Inland Northwest	8	11	6%
J009 - South Puget Sound	9	24	24%
J049 - Member-at-Large	9	26	29%
J050 - Alaska, Fairbanks, University of	0	12	140%
J051 - University of Idaho	10	24	57%
J052 - Montana Tech	20	43	54%
J053 - Montana State University	5	8	30%
J054 - Oregon State University	5	35	90%
J055 - Portland, University of	8	5	40%
J056 - Portland State University	11	18	131%
J057 - Saint Martin's University	21	21	50%
J058 - Seattle University	4	9	63%
J059 - Washington, University of	20	87	100%
J060 - Washington State University	5	24	250%
J061 - Oregon Institute of Technology	1	6	500%
J062 - Walla Walla College	1	1	0%
J063 - Idaho State University	7	4	17%
J065 - Gonzaga University	3	21	118%
J067 - Boise State University	0	15	400%
J068 - Alaska, University of (Anchorage)	3	15	50%
Region J	302	838	42%





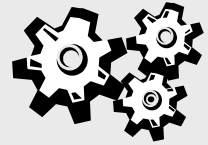
About Our Organization

The Society of Women Engineers (SWE), founded in 1950, is a non-profit educational and service organization. SWE is the driving force that establishes engineering as a highly desirable career aspiration for women.

SWE empowers women to succeed and advance in those aspirations and receive the recognition and credit for their life-changing contributions and achievements as engineers and leaders.

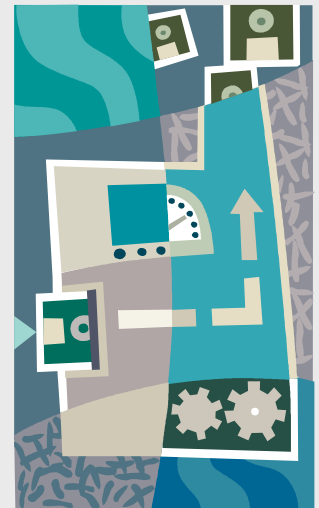


Visit www.swe.org for more information.



Region J Council Meeting Schedule

	Dates	Activity
2011	25-Jul	Region J Orientation - Teleconference
	28-Aug	Region Meeting at ABJ Fall Meeting (Orange Cty, CA)
	19-Sep	Region J Teleconference
	13-Oct	Region Meeting at WE11 (Chicago, IL)
	21-Nov	Region J Teleconference
	19-Dec	Region J Teleconference
2012	16-Jan	Region J Teleconference
	3-Mar	Region Meeting at Joint Region Conference (Honolulu, HI)
	16-Apr	Region J Teleconference
	21-May	Region J Teleconference
	18-Jun	Region J Teleconference



Important Region J Dates

	Dates	Activity
2011	30-Jul	FY11 Financial Reports Due (Section and Region)
	27-28 Aug	Region ABJ Fall Meeting (Orange County, CA)
	10-Sep	Section Report Due
	12-15 Oct	Society Conference (Chicago, IL)
	10-Nov	Section Report Due
	15-Nov	IRS Filing Due (E-postcard if < \$25k)
	2012	10-Jan
15-Feb		Region J Award Submission Due (Tentative)
29-Feb - 3-Mar		2012 Western Regions Joint Conference (Honolulu, HI)
10-Mar		Section Report Due
31-Mar		Society Individual Award Applications Due
1-Apr		Region J Elections Start
10-May		Section Report Due
1-Jul		Society Section Award Applications Due



Region J Newsletter Editor
Melissa Branch
greatlandgirl@gmail.com

Please send ideas and info for future newsletters to Melissa. Comments and feedback are also appreciated.