

Region J Newsletter



Alice's Welcome (A Note from the Region Governor)

April 2014

Volume 3, Issue 3



Contents

Governor Message	1
FY15 RCT	1
Upcoming Events	2
Communication	2
Officers and Chairs	3
Region J Awards	4
Member Spotlight	5
Senate Update	5
Meeting Schedule	10
Important Dates	10

Hello Region J!

We are in the home stretch of FY14. Now is the time to be thinking about FY15 elections, officer transitions, end-of-year activities, and just around the corner – summer! As a change of pace to a traditional Newsletter Introduction, I'm going to give you some summer reading recommendations!

Written 25 years ago, recommended to me 15 years ago, and finally read last year, I really enjoyed *Geek Love* by Katherine Dunn, a Portland resident. See a recent article about it here (http://www.wweek.com/portland/article-22200-geek_loved.html).

I rarely watch a movie or read a book more than once, but I just finished the novel *Special Topics in Calamity Physics* by Marisha Pessl for the second time. It is a coming of age mystery with some big twists. I read it a second time to see if I could spot the clues knowing the ending! The story has nothing to do with physics in the academic sense of the word!

One last recommendation is *The Orchardist* by Amanda Coplin, an historical fiction novel set in eastern Washington State around the turn of the 20th century. Amanda Coplin also currently lives in Portland.

Happy reading!

Alice Orrell
Region J Governor

FY15 RCT

Announcing the FY15 Region Collegiate Team:

Region Collegiate Representative (RCR)

Claire Offer - Oregon State University (J054)

Region Collegiate Communications Editor (RCCE)

Megan Shadlow - Oregon State University (J054)

Region Collegiate Senator (RCS)

Mandy Brewer - Montana Tech (J052)



Upcoming Events and Due Dates

Region J Teleconference

Monday, April 28
6:30 pm AK/7:30 Pacific

Conference Dial-in No.:
(877) 336-1828
Participant Access Code:
3724632#

Prof Section Reports and Vitality Reports Due

Friday, May 16

FY15 Leadership Rosters Due

Monday, June 30

Society Section Award Applications Due

Tuesday, July 1

FY14 Financial Reports Due (Section & Region)

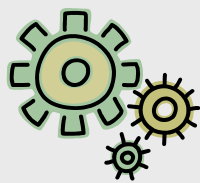
Wednesday, July 30

ABJ Leadership Summit - Las Vegas, NV

September 12-14, 2014

Society WE14 Conference**Region J FY15 Conference (JCON15)**

Kennewick, WA
April 10-12, 2015



Region Communication

Use your resources to keep up on all Region J happenings in FY14!

Region J Senate Blog

Our Senators use this venue to communicate information regarding Society-level business that they conduct on your behalf. Let your voice be heard! Subscribe to the [blog](#) and participate in surveys posted throughout the year.

Region J Website Looking for links to each of the Section's websites or Region Officer e-mail addresses? Look no further than the [Region J Website!](#)

Dropbox A Dropbox folder has been set up on which we will store documents related to Region J business, such as motions, agendas and minutes, reports, etc. If you are a region leader and have not yet received an e-mail invite to this site, please contact [Alice Orrell](#).

Region J Collegiate Blog

The Region J Collegiate Communications Editor (RCCE) keeps this blog up -to-date with happenings from across Region J and the Society. [Subscribe](#) and receive e-mail notifications when new items are posted. Items posted are relevant to all members.

Region J Newsletter This bi-monthly publication will be sent via e-mail to all Region J members. Submit articles and reports to [Shaunna Winton](#).

Graduate Student Blog

This blog serves the graduate student community in SWE, and is maintained by the SWE Graduate Member Coordinator and Graduate Programs Coordinators. [Subscribe](#) and receive e-mail notifications when new items are posted.

Facebook Like Region J on Facebook: <http://www.facebook.com/#!/groups/2212498850/>



Region J Officers and Committee Chairs

Governor: Alice Orrell (J001 - Eastern Washington)

Lt. Governor: Dana Day (J003 - Pacific Northwest)

Treasurer: Jennifer Kootstra (J002 - Columbia River)

Secretary: Jessica Sun (J003 - Pacific Northwest)

Professional Senators: Suzi Jewett (J002 - Columbia River)
Wendy Jenkins (J003 - Pacific Northwest)

Society Nominating Committee Rep: Kelly Schable (J003 - Pacific Northwest)

Collegiate Senator: Claire Offer (J054 - OSU)

RCR: Corey Castelow (J056 - Portland State)

RCCE: Amanda Eagle (J051 - University of Idaho)

Society Bylaws: Barbara Darnell (J003 - Pacific Northwest)

Society Membership: Erin Wakefield (J002 - Columbia River)

Society/Region J Outreach: Coral Jean Cotterell (J002)

Leadership Coaching Committee (LCC): Tamaira Ross (J003), Joan Young (J001)

Collegiate Leadership Coaching (CLCC): Morgan Miller, Shivani Gupta, Rim Touil
(all J003), Leah Meeks (Montana)

Region J Awards: Suzi Jewett (J002 - Columbia River)

Region J Nominating: Coral Jean Cotterell (J002)

Region J Mentoring: Susan Young (J003 - Pacific Northwest)

Region J Webmaster: Jenny Smith (J006 - Southwest Idaho)

Region J Newsletter: Shaunna Winton (J009 - SPS)

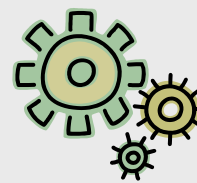
Region J Conferences: Dimple Patel (J001 - Eastern Washington)

Graduate Student Rep: Shivani Gupta (J003 - Pacific Northwest)

Multicultural Committee: Marcie Mathis (J009 - South Puget Sound)

Program Development Grants Cary Kaczowka (J003 - Pacific Northwest)

Society Awards Kathryn Cook (J003 - Pacific Northwest)





Region J Awards

2014 Region J Professional Development Award

Columbia River Section.

The Columbia River section was awarded the Professional Development Award for their creation of the "Columbia River Section Professional Development Event and Career Fair".

In March of FY13, the Society of Women Engineers Columbia River section co-hosted an all-day professional development event/career fair with Intel Corporation in Hillsboro, Oregon. The event featured 4 professional development speakers, two meals, networking, and an Intel Career Fair with representatives from different business groups. Additionally, the Intel museum was open to all attendees.

Over 200 people pre-registered for this event and 170 attended from multiple states; about 10% were current SWE members, and about 5-10% showed interest in becoming a SWE member as a result of the event.

This was one of the largest events held by the section, and was effectively as much work as putting on a region conference. Partnering with Intel provided us with funding necessary to put on such a large scale event, including free meals and highly sought after speakers. The idea of pairing corporate recruitment and professional development into one event was a new idea for us and provided an opportunity for a clear win/win for both SWE and Intel.

2014 Region J Outstanding Collegiate Program Award

Washington State University

Washington State University was awarded the Outstanding Collegiate Program Award for their creation of the "WSU SWE Mentoring Program".

Washington State University's (WSU) section implemented the Mentor Program to give their members support as they further their education. The Mentor Program began from the passion of Sandy Fryer, the second female to graduate from WSU with a degree in Mechanical Engineering. The program was created after she realized the important role mentorship played in her collegiate success.

The goal of the program is to match a SWE member with a female working in a similar discipline of engineering to share advice, words of encouragement, and insight into industry.

Currently, the program has 30 mentors with 37 mentees. The mentees are all SWE section members at WSU. Most of the mentors are located within the state of Washington. The program is always expanding as they personally reaching out to companies, alumni, and faculty to become mentors.

The Mentor Program Coordinator carefully matches based on field of interest, major, and hometown, with the expectation that mentors and mentees must meet face-to-face at least twice a year, including one sponsored lunch, to ensure that the relationship has a chance to flourish. The goal of the program is to be professional in all aspects including an application process, expectation setting, alignment between mentor/mentee, and follow up processes.

"I always wondered why somebody didn't do something about that. Then I realized I was somebody."

~ Lily Tomlin



Member Spotlight - Maria Kampsen



On Tuesday, March 5, 2014, Maria Kampsen (J005) was recognized by the Alaska Chapter of NAWIC (National Association of Women in Construction) with the 2014 Constructive Woman Award!

This award was presented to four local women who were selected from 12 nominees who have been instrumental in the Alaska Construction Industry and are recognized for their longevity, mentorship, and dedication.

The nominations were eliminated of any identifiers to the person and sent to a chapter in another state – so not only did she impress those that know her, she impressed those who didn't!



About Our Organization

The Society of Women Engineers (SWE), founded in 1950, is a non-profit educational and service organization.

SWE is the driving force that establishes engineering as a highly desirable career aspiration for women.

SWE empowers women to succeed and advance in those aspirations and receive the recognition and credit for their life-changing contributions and achievements as engineers and leaders.



Region J Council Meeting Schedule

Date	Activity	Tentative Agenda
July 22, 2013	FY14 Orientation	Kick-Off and Introductions
August 18, 2013	Region J Meeting at ABJ Meeting	Tactical plan, depends on attendance
August 19, 2013	Region J Teleconference	Review/approve FY14 budget, tactical plan
September 23, 2013	Region J Teleconference	Prep for WE13 Meeting
October 24, 2013	Region J Meeting at WE13	Society business
January 27, 2014	Region J Teleconference	Prep for JCON14 meeting
March 2, 2014	Region J Meeting at JCON14	Society business, new region officers
March 24, 2014	Region J Teleconference	Tactical plan review
April 28, 2014	Region J Teleconference	Prep for section elections
June 2, 2014	Region J Teleconference	Wrap-up, end of year reporting

Important Region J Dates

Date	Activity
July 30, 2013	FY13 Financial Reports Due (Section and Region)
August 1 - 3, 2013	RG Summit and FY14 Board Installation; Peoria, IL
August 17-18, 2013	ABJ Meeting; Sacramento, CA
September 16, 2013	Professional Section Reports and Tactical Plans Due
October 24 - 26, 2013	Society Conference; Baltimore, MD (Region J Meeting: Thursday, October 24)
November 15, 2013	IRS Filing Due (E-Postcard)
February 1, 2014	Region J Award Applications Due (to be presented at JCON14)
February 1, 2014	The proposed slate for governor and professional senator must be presented to the region council by February 1.
February 2014	Submit Travel Fund Contribution
February 14, 2014	Professional Section Reports Due
February 28 - March 2, 2014	Region J Conference; Portland, OR
March 31, 2014	Society Individual Award Applications Due
April 1, 2014	Region J Elections start
May 16, 2014	Professional Section Reports and Vitality Reports Due
June 30, 2014	FY15 Leadership Rosters Due
July 1, 2014	Society Section Award Applications Due
July 30, 2014	FY14 Financial Reports Due (Section and Region)



Region J Newsletter Editor

Shaunna Winton

Shaunna.winton@swe.org

Please send ideas and info for future newsletters to Shaunna. Comments and feedback are also appreciated.