

Region J Newsletter



Alice's Welcome (A Note from the Region Governor)

October 2013

Volume 3, Issue 1



Contents

Governor Message	1
Communication	1
Upcoming Events	2
WE13	2
Officers and Chairs	3
JCON14	4
WE13 Scavenger Hunt	5
Mentorship Program	6
Member Spotlight	7
Meeting Schedule	8
Important Dates	8

Hello Region J!

Welcome to the new SWE fiscal year! I am busy with work, SWE, and vacation travel. Can you guess where I am in this picture? First person to email the correct answer to aliceorrell@gmail.com wins a treat! With all of my travel, I look forward to seeing many of you over the upcoming year. And thanks to Shaunna for getting this newsletter up and running!



Region Communication

Use your resources to keep up on all Region J happenings in FY14!

Region J Senate Blog

Our Senators use this venue to communicate information regarding Society-level business that they conduct on your behalf. Let your voice be heard! Subscribe to the [blog](#) and participate in surveys posted throughout the year.

Region J Website Looking for links to each of the Section's websites or Region Officer e-mail addresses? Look no further than the [Region J Website!](#)

Dropbox A Dropbox folder has been set up on which we will store documents related to Region J business, such as motions, agendas and minutes, reports, etc. If you are a region leader and have not yet received an e-mail invite to this site, please contact [Alice Orrell](#).

Region J Collegiate Blog

The Region J Collegiate Communications Editor (RCCE) keeps this blog up-to-date with happenings from across Region J and the Society. [Subscribe](#) and receive e-mail notifications when new items are posted. Items posted are relevant to all members.

Region J Newsletter This bi-monthly publication will be sent via e-mail to all Region J members. Submit articles and reports to [Shaunna Winton](#).

Graduate Student Blog

This blog serves the graduate student community in SWE, and is maintained by the SWE Graduate Member Coordinator and Graduate Programs Coordinators. [Subscribe](#) and receive e-mail notifications when new items are posted.

Facebook Like Region J on Facebook: <http://www.facebook.com/#!/groups/2212498850/>



Upcoming Events and Due Dates

WE13 Conference
Baltimore, Maryland
October 24-26, 2013

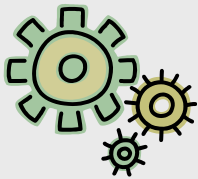
Region J FY14 Conference
Portland, Oregon
Feb 28 - Mar 2, 2014

Region J Meeting
Thursday, October 24
At WE13

IRS Filing Due
Tuesday, November 15th
E-postcards < \$25,000
Return > \$25,000

Region J Teleconference
Monday, January 27
6:30 pm AK/7:30 Pacific

Conference Dial-in No.:
(877) 336-1828
Participant Access Code:
3724632#



WE13 (October 24-26, Baltimore, MD)



Experience three days of energy and a lifetime of opportunity at WE13, the SWE Society Annual Conference, October 24-26 in Baltimore.

With more than 6,000 women engineers and technologists, the WE13 Conference is the perfect place for both experienced professionals and collegians just starting their careers to:

Participate in valuable professional development sessions

Network with other engineering professionals and students

Find your dream job at the Career Fair, featuring more than 250 companies, government agencies and universities

Experience Baltimore through numerous technical and sight-seeing tours

Enjoy exciting plenaries and awards banquets, including Celebrate SWE!

Relax in the Lava Lounge, and read inspiring stories of SWE women and share your own

Learn more at the conference website - we13.swe.org. Check out the benefits of attending as a [professional](#) or as a [collegiate](#).

For more information about Baltimore, go to Baltimore.org



Region J Officers and Committee Chairs

Governor: Alice Orrell (J001 - Eastern Washington)

Lt. Governor: Dana Day (J003 - Pacific Northwest)

Treasurer: Jennifer Kootstra (J002 - Columbia River)

Secretary: Jessica Sun (J003 - Pacific Northwest)

Professional Senators: Suzi Jewett (J002 - Columbia River)
Wendy Jenkins (J003 - Pacific Northwest)

Society Nominating Committee Rep: Kelly Schable (J003 - Pacific Northwest)

Collegiate Senator: Claire Offer (J054 - OSU)

RCR: Megan Varner (J059 - UW)

RCCE: Corey Castelow (J056 - Portland State)

Society Bylaws: Barbara Darnell (J003 - Pacific Northwest)

Society Membership: Eric Wakefield (J002 - Columbia River)

Society/Region J Outreach: Coral Jean Cotterell (J002)

Leadership Coaching Committee (LCC): Tamaira Ross (J003), Joan Young (J001)

Collegiate Leadership Coaching (CLCC): Morgan Miller, Shivani Gupta, Rim Touil
(all J003)

Region J Awards: Suzi Jewett (J002 - Columbia River)

Region J Nominating: Coral Jean Cotterell (J002)

Region J Mentoring: Susan Young (J003 - Pacific Northwest)

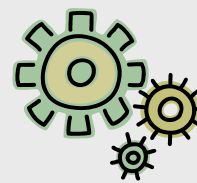
Region J Webmaster: Jenny Smith (J006 - Southwest Idaho)

Region J Newsletter: Shaunna Winton (J009 - SPS)

Region J Conferences: Dimple Patel (J001 - Eastern Washington)

Graduate Student Rep: Shivani Gupta (J003 - Pacific Northwest)

Multicultural Committee: Marcie Mathis (J009 - South Puget Sound)





Region J Conference (JCON14)

"I always wondered why somebody didn't do something about that. Then I realized I was somebody."

~ Lily Tomlin

The Columbia River Section is proud to host the 2014 Northwest Star Region J Conference. We look forward to seeing you Explore various topics available in three conference tracks, Dream about new challenges you may wish to pursue, and Discover new opportunities inside and outside your sphere of influence. Take full advantage of the conference offerings including the career fair where various companies will be showcasing engineering roles within their organization.

Call for Speakers

The Society of Women Engineers' Region J Conference (JCON14) will be held February 28 - March 2, 2014 in Portland, Oregon.

We are looking for speakers for our three tracks for our main conference day on Saturday March 1, 2014. Ideas for each track are suggested but not limited to:

- Explore Engineering Innovations - Focusing on the amazing things we as women engineers do. We encourage women with interesting jobs/research, as well as non-traditional career paths to present.
- Dream About Your Future - focusing on the College to Career transition, including interview skills, resumes, what no one tells you about life after college.
- Discover Your Career Best - focusing on career skills, such as presentation skills, communication, networking.

If you are interested in presenting, please submit your presentations abstracts/ideas to [Ann Simmons](#), conference speaker chair, by October 31, 2013. Please include any specific time request in the email.

Feedback: You will receive word via email on presentation selections and scheduling by the first week of December.



WE13 Photo Scavenger Hunt

FY14 Celebrate SWE! Region Photo Scavenger Hunt

Make Connections

1. Connect as a team. Construct your Region Letter using Region members only. International team should construct the letter Z. **(Do at WE13)**
2. Connect with the future. Photo from an outreach event in your region. The photo should be consistent with the connections theme and creatively show "connecting". For example, building popsicle stick bridges or creating with Legos. **(Use photos from Holly Bork - J003, provided already for SWE Yearbook)**
3. Connect across generations. Generational photo: undergrad, grad student, professional <10 years, professional 10 to 20 years, professional > 20 years, and retired. **(Do at WE13)**
4. Connect to your academic life. Show us your "favorite" science or engineering formula in a creative way. **(J001)**
5. Connect professionals and collegiates. Photo from a joint professional-collegiate event in your region. **(J006/BSU event)**
6. Celebrate diversity in your connections and in SWE. Include a photo that highlights diversity (gender diversity, ethnic diversity, etc.) in your region. **(J001)**
7. Connecting with the corporate world. Show us what the successful SWE business woman should be or will be wearing at the SWE Career Fair. Does not have to be taken at the Career Fair, but may be. **(Need)**

Make History

8. Historical journey. "Getting there is half the fun" – photo of members traveling to WE13. **(Need)**
9. Region history. Locate an archive photo of a current leader or former recognizable leader in your region such as a BOD member, a region governor, a long-time active member, etc. Photo must be at least 15 years old and we must be able to tell who it is. **(Use Isabelle French photo)**
10. Society history. Take a photo with a past or current SWE Society leader. **(Do at WE13)**
11. Geographic history. Take a photo of a historical Region landmark. It needs to be obvious what the landmark is. Or tell us what it is. **(J002)**
12. Section/Group History. Recognize a signature event or accomplishment from your region. Accomplishment should have a historical context, such as a section anniversary celebration, a chartering banquet for a new section, a 5th tournament, etc. **(Need)**
13. University history. Take a photo sharing with us something a college or university in your region is proud of in their history. It needs to be obvious what the notable historical event or item is. Or tell us what it is. **(Need)**
14. Historical city. Baltimore is a city rich in history. Include a photo that shows how or why Region members will remember their visit to Baltimore and WE13. **(Do at WE13)**

WE13 Wild Card Photo

15. TBD. Photo requirement will be distributed at RG meeting on Wednesday. **(Do at WE13)**

Rules

- All photos must be taken since WE12 (November 2012 or later)
- All photos must include at least one member of your region.
- All the photos can not be provided by 1 SWE section or group. Multiple sections or groups must be evident in the photos.

Please send photos to [Alice Orrell](#).



Region J Pipeline & Mentoring Program

Do you want to be on the SWE Board of Directors? The next region senator or governor? Or the section president? Even just learn about SWE and the many ways you could get involved? Have you held one of these positions and just want to share your knowledge with others? Join the Region J Leadership Pipeline and Mentoring program!

The goal of the Region J Leadership Pipeline and Mentoring program is to help expose all members to the various opportunities the Society offers. We want to provide those who want it the right knowledge and skills to help them move to the next level, section, regional or Society.

The program will pair up the SWE experienced with those who want to learn. The pairings will be based on your interest and those with similar backgrounds. We will also have quarterly telecons on topics of your choice to help provide you the right skills you may need for that next position. You can be both a mentor and a mentee, we are always learning.

If you are interested in being a mentor or mentee (even both) please fill out the [survey](#):

Schedule:

Sign-up Closes Oct 11th

Paired by Oct 18th

Kick-off Oct 22nd

Mentee Enrichment Workshop Society Conference Oct 26th

Quarterly Telecons TBD

If you have any questions feel free to contact [Susan Young](#) .



Member Spotlight - Modupe Oluwadiya

My Passion

Engineering is creativity. The euphoria gained when a problem is solved, especially during a startup and commissioning effort, is unmatched. The satisfaction of knowing that you played a major part in the design, installation and commissioning of something that provides revenue, and improves operation of a system, is second to none.

My name is Modupe Oluwadiya and engineering has always been my passion. I am an Electrical Engineer with 5 years' of diverse professional work experience as an Instrument Engineer, Fire & Gas Engineer, and a Power Systems Engineer, in ConocoPhillips. I had the privilege of starting out in an amazing accelerated young engineer development program within ConocoPhillips that has aided me in obtaining a diverse work experience and opportunities to work in various locations. I graduated with a BS degree in Electrical Engineering in 2008 from Oklahoma State University. I am the last born of four children. My father is a retired Veterinary Doctor and my mother is a retired College Professor. I have two sisters and a brother. In my leisure time, I enjoy reading, writing poetry, volunteering in community service opportunities, traveling, photography and zumba dance. One of my favorite community service event was volunteering for the 2012 SWE 'Invent it. Build it.' outreach event in Houston during the 2012 SWE National Conference. It was a great occasion to participate in an amazing opportunity that allowed us to open the doors of engineering concepts to young girls, as well as to network with fellow SWE members.

In my career, I provide electrical engineering technical guidance for Operations & Maintenance, as well as for five new remote oil & gas facility development projects, including one offshore platform. My work as a field electrical engineer for a multinational oil & gas company benefits humanity via ensuring that power supply is available for both the operating and the developing oil & gas fields; therefore ensuring the supply of crude oil & gas.

The by-products of crude oil & gas are used for transportation fuel, electrical power generation, heating homes and businesses, etc. Oil & gas production and supply is a key factor that influences many areas of our daily lives, and it is one of the key building blocks of modern society as we know it. It is an honor to collaborate with technical experts to create innovative technology that benefits humanity and positively impacts the global economy.

All in all, my experience as a female engineer has been challenging and very rewarding, and I look forward to future challenges and opportunities to be innovative.

What's That Mean?

SWE uses a lot of acronyms. Do you know what they all mean?

Here's a quick guide to the acronyms used in this newsletter:

FY

fiscal year

JCon

Region J Annual Conference

MAL

Members-at-large

RCT

Region Collegiate Team

RCR

Region Collegiate Representative

RCCE

Region Collegiate Communications Editor

RCS

Region Collegiate Senator

SWE

Society of Women Engineers



About Our Organization

The Society of Women Engineers (SWE), founded in 1950, is a non-profit educational and service organization.

SWE is the driving force that establishes engineering as a highly desirable career aspiration for women.

SWE empowers women to succeed and advance in those aspirations and receive the recognition and credit for their life-changing contributions and achievements as engineers and leaders.



Region J Council Meeting Schedule

Date	Activity	Tentative Agenda
July 22, 2013	FY14 Orientation	Kick-Off and Introductions
August 18, 2013	Region J Meeting at ABJ Meeting	Tactical plan, depends on attendance
August 19, 2013	Region J Teleconference	Review/approve FY14 budget, tactical plan
September 23, 2013	Region J Teleconference	Prep for WE13 Meeting
October 24, 2013	Region J Meeting at WE13	Society business
January 27, 2014	Region J Teleconference	Prep for JCON14 meeting
March 2, 2014	Region J Meeting at JCON14	Society business, new region officers
March 24, 2014	Region J Teleconference	Tactical plan review
April 28, 2014	Region J Teleconference	Prep for section elections
June 2, 2014	Region J Teleconference	Wrap-up, end of year reporting

Important Region J Dates

Date	Activity
July 30, 2013	FY13 Financial Reports Due (Section and Region)
August 1 - 3, 2013	RG Summit and FY14 Board Installation; Peoria, IL
August 17-18, 2013	ABJ Meeting; Sacramento, CA
September 16, 2013	Professional Section Reports and Tactical Plans Due
October 24 - 26, 2013	Society Conference; Baltimore, MD (Region J Meeting: Thursday, October 24)
November 15, 2013	IRS Filing Due (E-Postcard)
February 1, 2014	Region J Award Applications Due (to be presented at JCON14)
February 1, 2014	The proposed slate for governor and professional senator must be presented to the region council by February 1.
February 2014	Submit Travel Fund Contribution
February 14, 2014	Professional Section Reports Due
February 28 - March 2, 2014	Region J Conference; Portland, OR
March 31, 2014	Society Individual Award Applications Due
April 1, 2014	Region J Elections start
May 16, 2014	Professional Section Reports and Vitality Reports Due
June 30, 2014	FY15 Leadership Rosters Due
July 1, 2014	Society Section Award Applications Due
July 30, 2014	FY14 Financial Reports Due (Section and Region)



Region J Newsletter Editor

Shaunna Winton

Shaunna.winton@swe.org

Please send ideas and info for future newsletters to Shaunna. Comments and feedback are also appreciated.